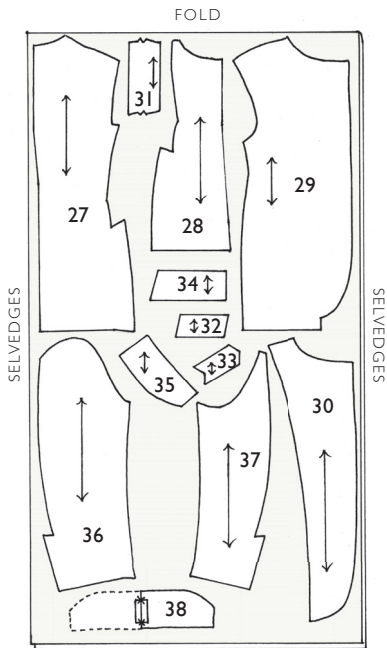


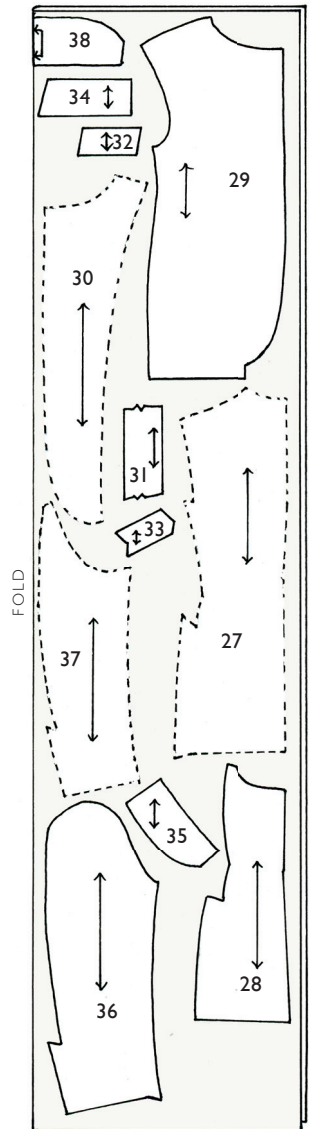
The Gentleman's Wardrobe
JACKET

Main fabric – 36in (90cm) wide



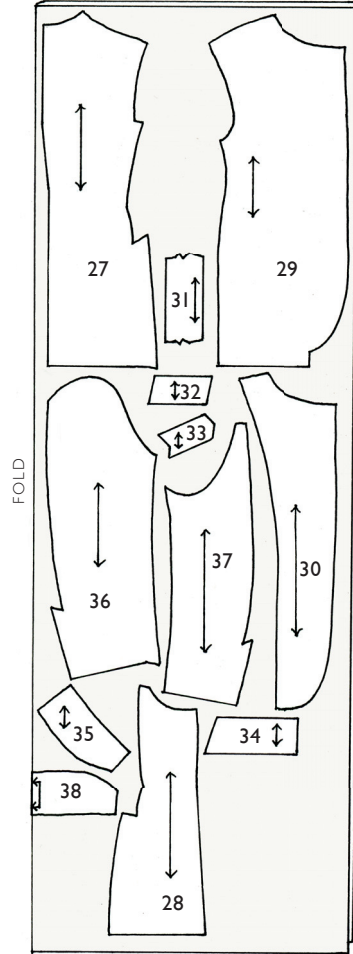
CUT ONE ONLY OF TOP COLLAR, BREAST POCKET WELT AND FACING

Main fabric – 45in (115cm) wide



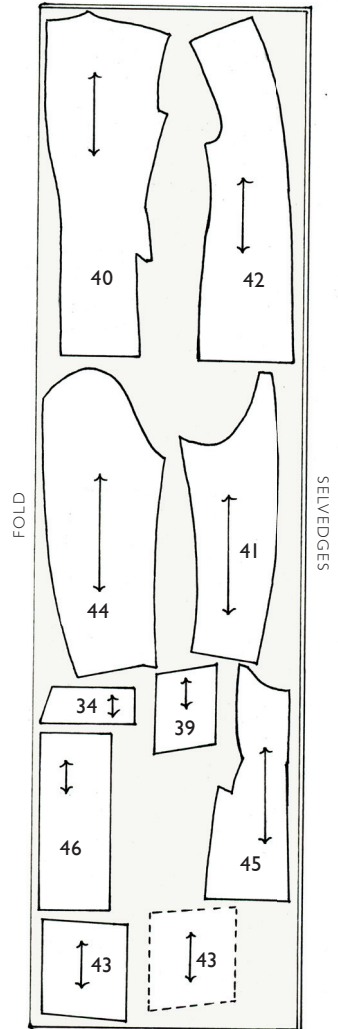
CUT ONE ONLY OF BREAST POCKET WELT AND FACING

Main fabric – 60in (150cm) wide

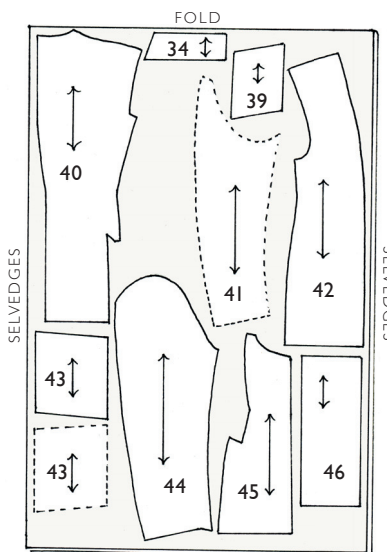


CUT ONE ONLY OF BREAST POCKET WELT AND FACING

Lining fabric – 45in (115cm) wide

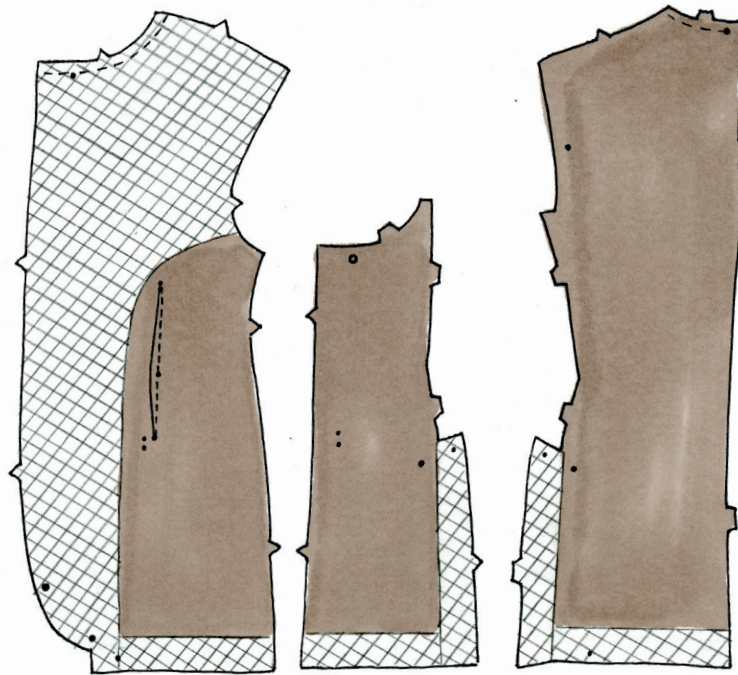
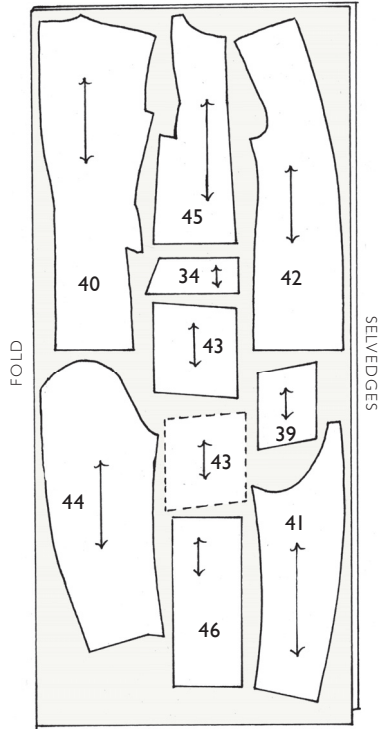


Lining fabric – 36in (90cm) wide

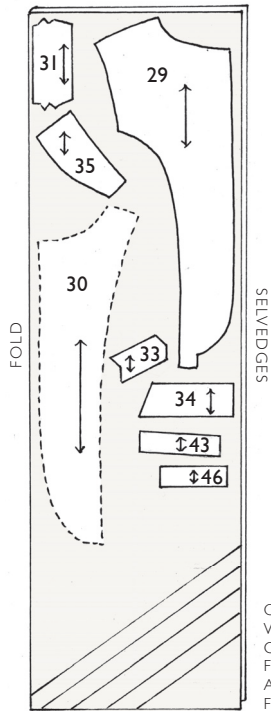


BROKEN LINES INDICATE REVERSE SIDE OF PATTERN

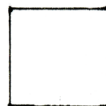
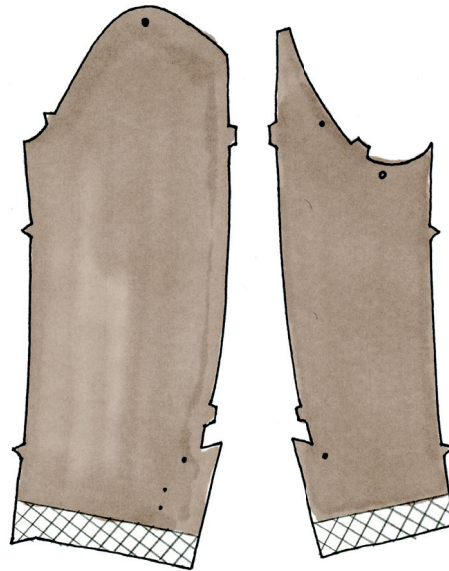
Lining fabric – 60in (150cm) wide



Interfacing – 36in (90cm) wide



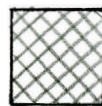
CUT 1½IN (4CM) WIDE BIAS STRIPS OF INTERFACING FOR JACKET HEM AND VENTS, AND FOR SLEEVE HEMS



RIGHT SIDE OF FABRIC



WRONG SIDE OF FABRIC



INTERFACING

Front and sides

1 Staystitch (see page 156) the neck edges of the front and back pieces to prevent the fabric from stretching. Stitch the darts on the front pieces (see page 161). Press the darts towards the centre front. Following the manufacturer's instructions, apply iron-on interfacing to the wrong side of each front. Apply 1½in (4cm) wide bias strips of interfacing to the hems of the front, side, back and sleeve pieces, and to the vent extensions on the back and side pieces. Trim the excess interfacing.