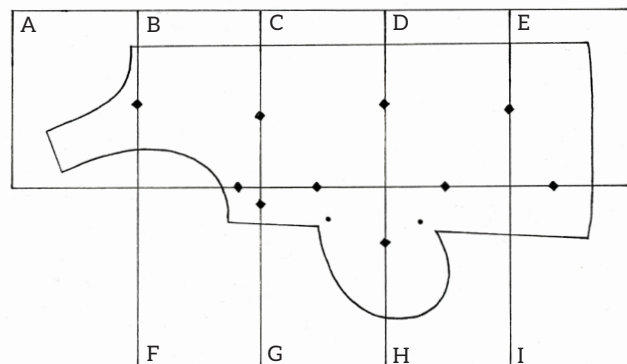


sashiko

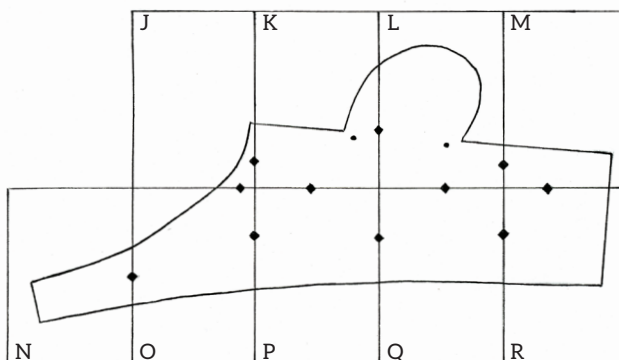
Japanese crossover apron

Here are the pattern pieces required to make the Japanese crossover apron. Print out each page on A3-size (29.7 x 42cm/11¾ x 16½in) paper, with the piece centred. Once the template is printed, place the pieces together as shown in the illustrations below, matching the numbered markings. Join them together using clear tape, with no overlaps at the edges.

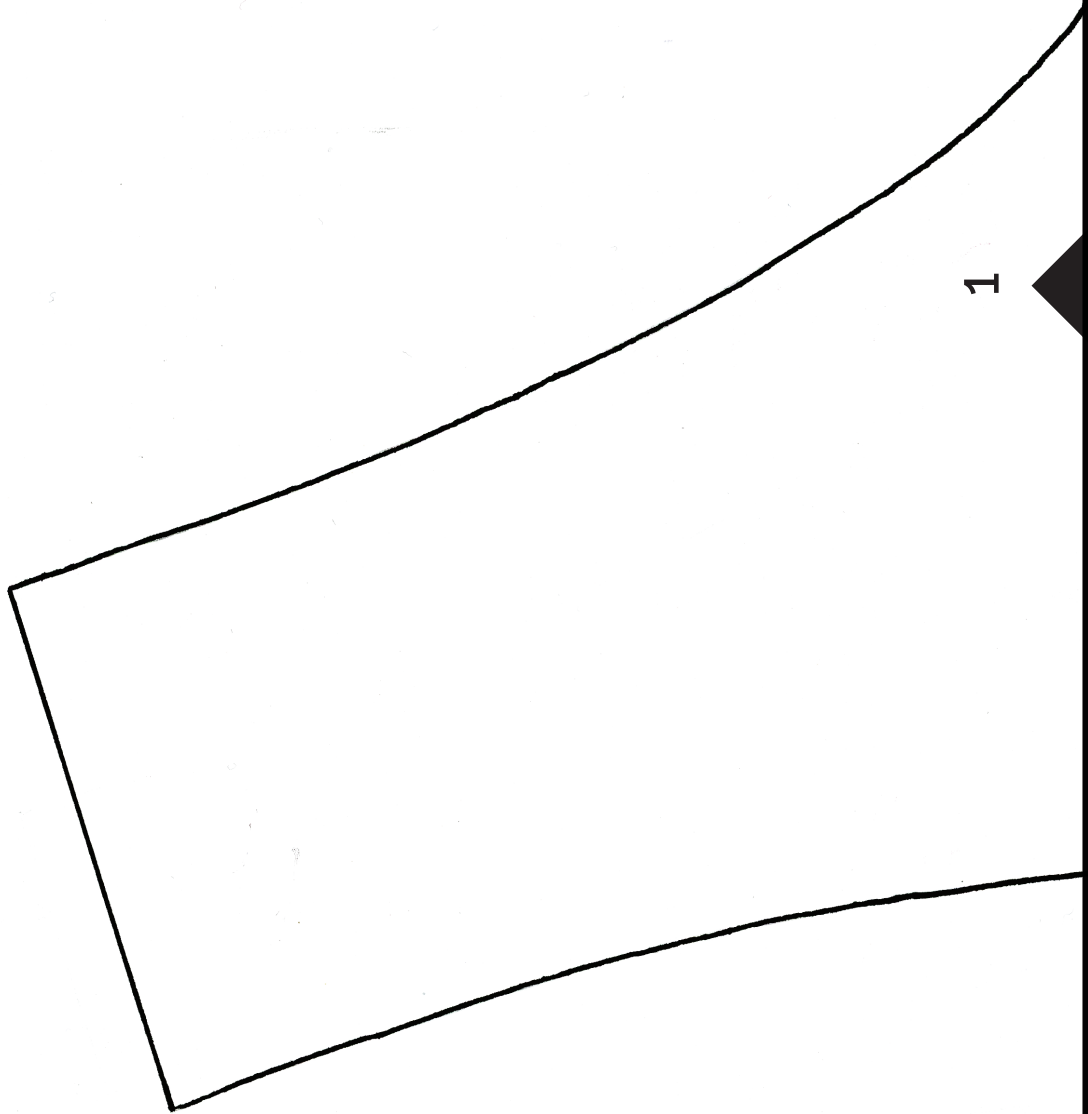
FRONT OF APRON



BACK OF APRON

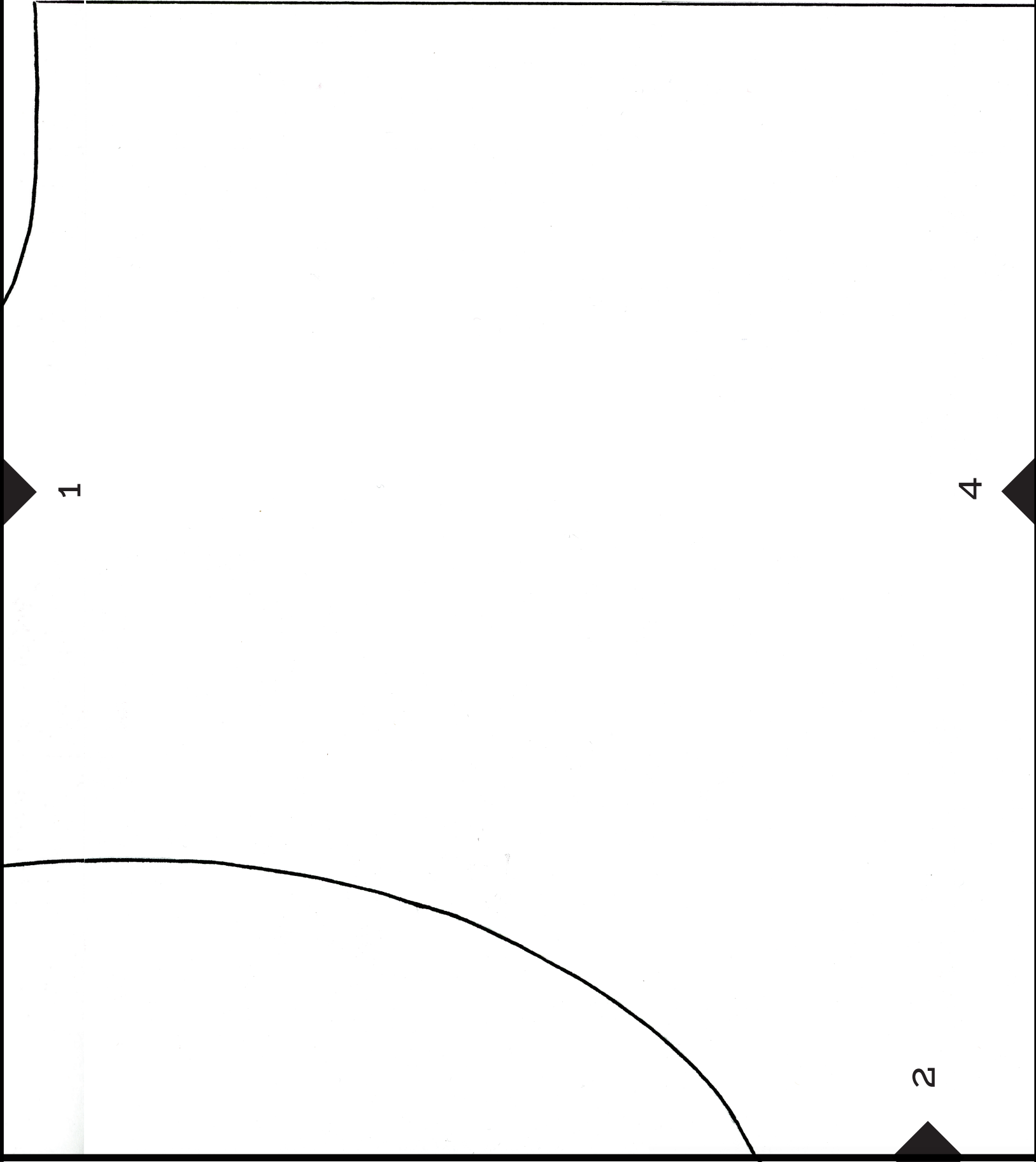


A



1

B



1

4

2

C

4

7

5

D

7

6

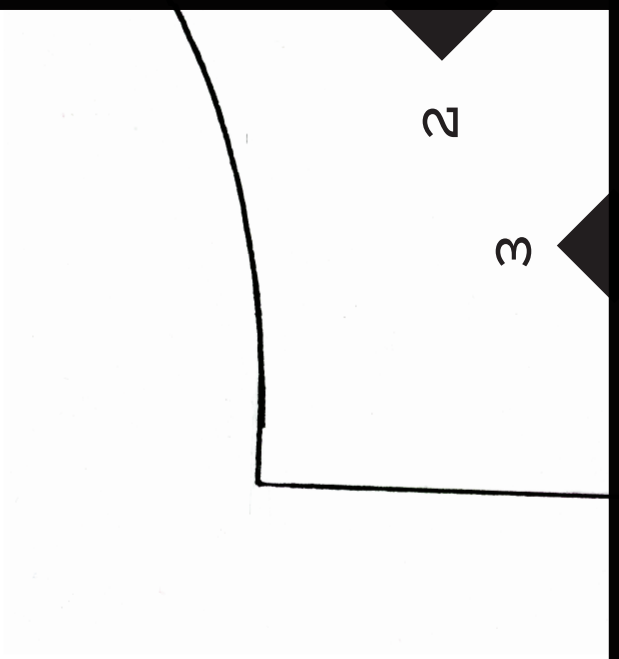
8

E

6

10

F

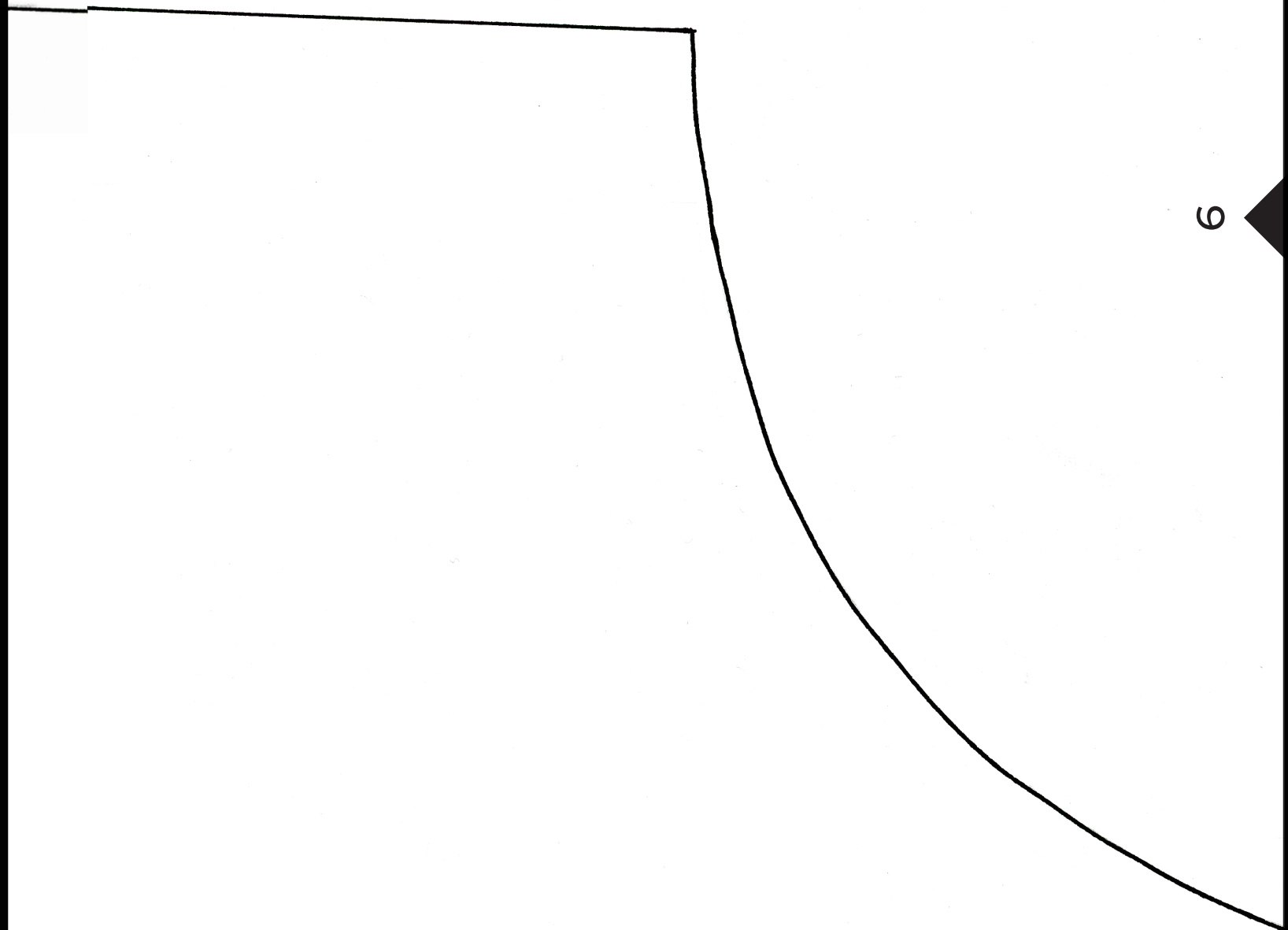


5

3

6

G



8



9

H

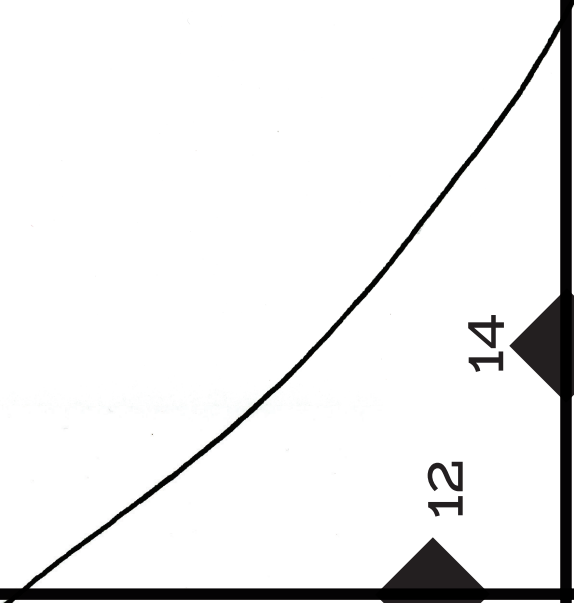
10

I

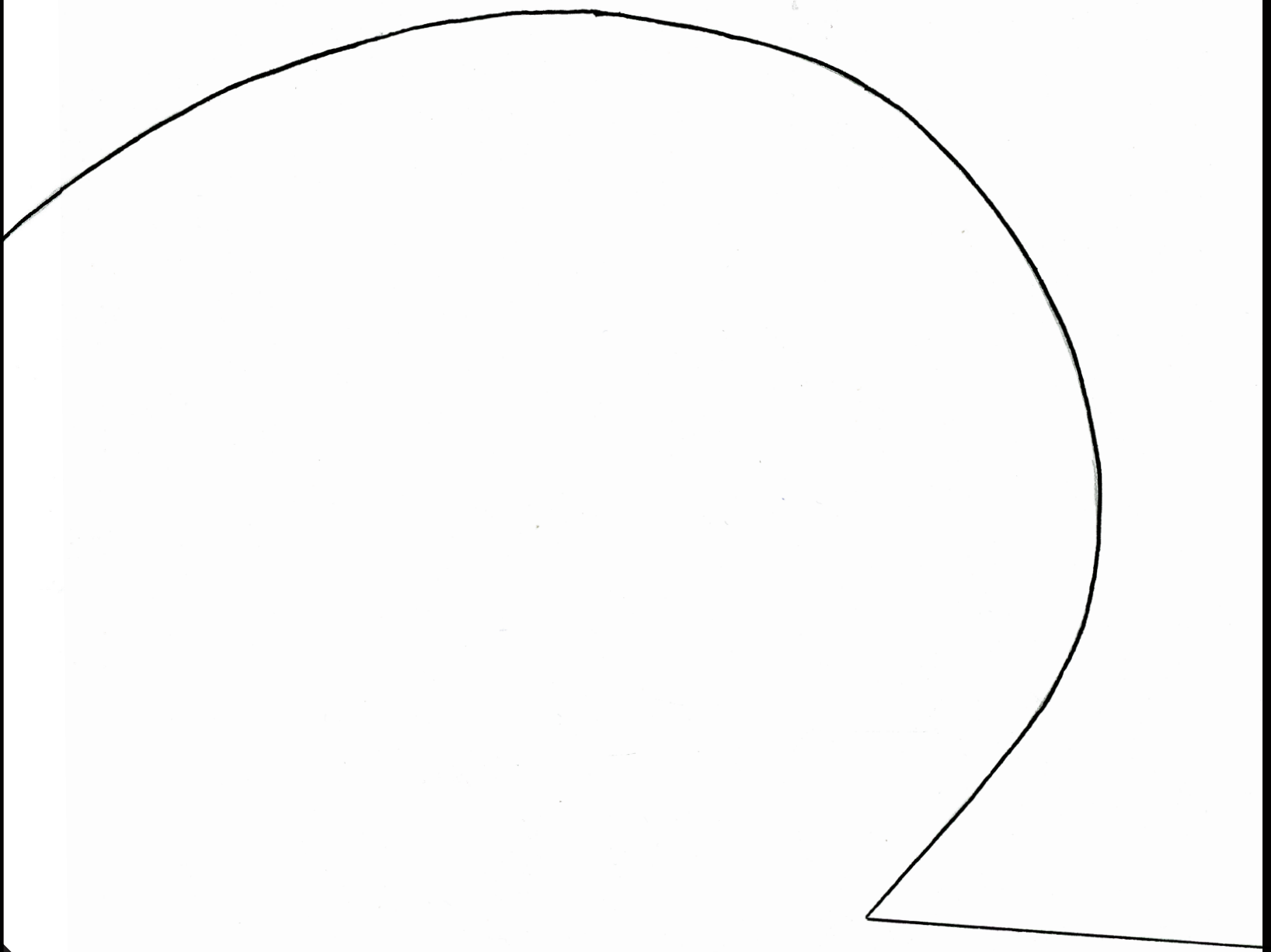
J

12

14



L



17



18

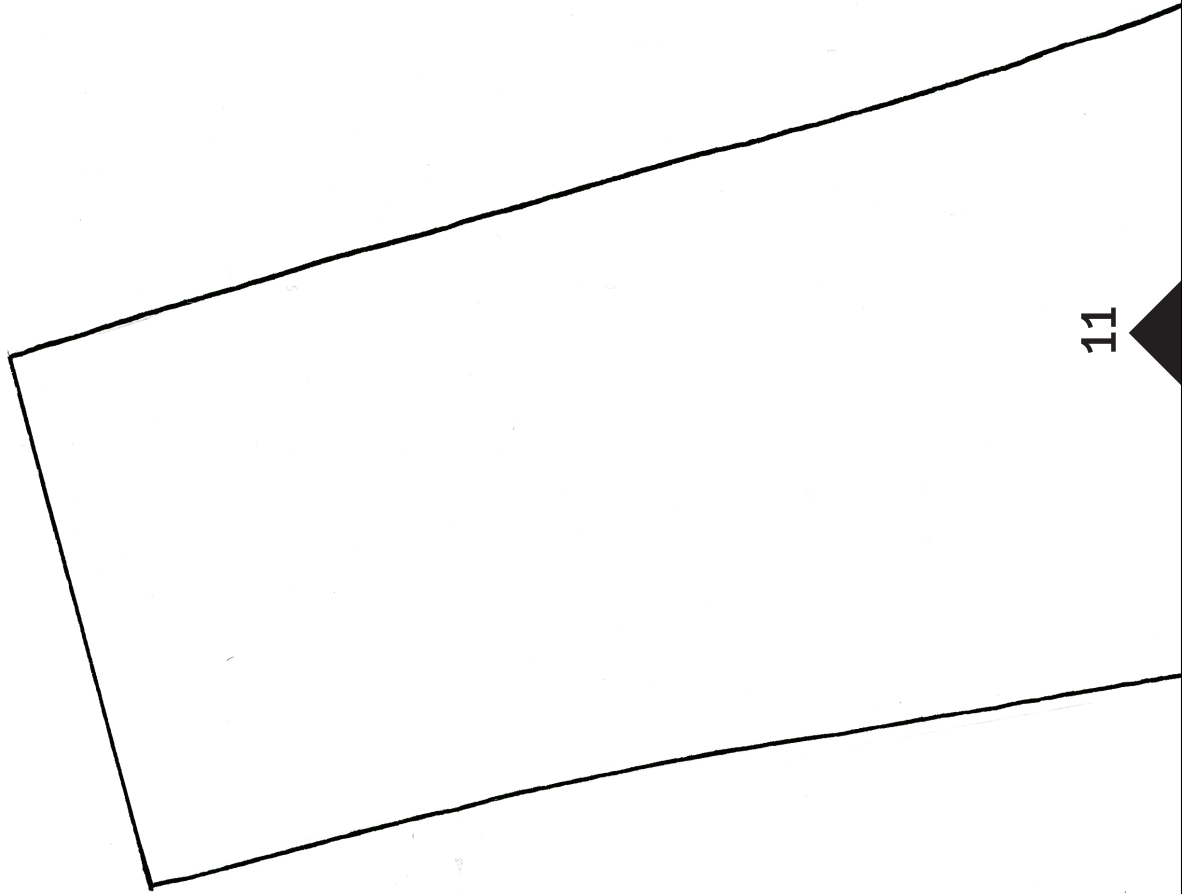
20

M

20

21

N



11



11

12

13

P

13

15

16

Q

16

18

19

21

19

R